



Carhaulers & Equipment



- 5" CHANNEL BUGGY HAULER (B5)
- 6" CHANNEL SUPER-WIDE (B6)
- 8" CHANNEL SUPER-WIDE (B8)
- ANGLE PIPETOP (P7)
- ANGLE PIPETOP (P8)
- 4" CHANNEL CARHAULER (C4)
- 5" CHANNEL CARHAULER (C5)
- 6" CHANNEL CUSTOM CARHAULER (CC)
- 8" CHANNEL CARHAULER (C8)
- LIGHT DUTY DECKOVER 5" CHANNEL (L5)
- MEDIUM DUTY DECKOVER 6" CHANNEL (L6)



5" Channel Buggy Hauler (B5)

B5



DRIVE-OVER
FENDERS



LED LIGHTS Lengths
18' & 20'

102" x 20' (B5) Pictured

Standard Features

- 7,000 lb. G.V.W.R.
- 3,500 lb. x 2 G.A.W.R.
- 2" Ball Coupler
- Safety Chains
- 1 - Side Wind Drop-Leg Jack (8,000 lb.)
- 2-Dexter E-Z lube Axles, Idler & Brake (3,500 lb.)
- 4 Leaf Double-eye Spring Suspension
- 4 - NEW 15" White Spoke Wheels
- 4 - NEW ST205/75R15 Radial Tires (1,820 lb.)
- Electric Breakaway Kit w/ Charger
- Rubrail & Stake Pockets
- 9" High Drive Over DP Steel Fenders
- 5' Channel Ramps w/ Holder
- 5" Channel Frame & Tongue
- 3" Channel Crossmembers 24" on Center
- 2" Treated Pine Lumber Deck
- 102" Wide Deck
- DOT Approved Flushmount LED Lights
- Sealed Wire Harness
- Sand Blasted, Acid Washed, Powder Coated

POWDER COATED

At PJ Trailers, every trailer we build is powder coated with Sherwin-Williams™ Powder Coat. A powder coat finish is far superior to conventional paint. It is extremely durable and does not easily crack, chip, or peel as conventional paint does. Powdercoating also helps prevent rust & corrosion making it the longest lasting and most durable finish on the market.

Coupler Options

- BP 2" A-Frame *
- BP 2 5/16" A-Frame
- BP 2" Adjustable
- BP 2 5/16" Adjustable
- 3" Pintle Eye - Channel-mount (14,000 lb.)

Axle Options

- (2) 3,500# One Electric / Spring *
- (2) 3,500# Electric / Spring
- (2) 5,200# One Electric / Spring
- (2) 5,200# Electric / Spring

Tail Options

- Straight Deck w/ 5' Slide-in Ramps *
- 2' Dovetail w/ 5' Slide-in Ramps
- 2' Dovetail w/ 2 Fold-up Ramps
- Straight Deck w/ 2 Fold-up Ramps
- Straight Deck w 4' Fold-up Gate
- 2' Dovetail w/ 4' Heavy Duty Fold-up Gate
- Straight Deck w/ Rear Slide-in Ramps

Color Options

- Black Powdercoat *
- Equipment Yellow Powdercoat
- Grey Powdercoat
- Red Powdercoat
- Regatta Blue Powdercoat
- Tractor Green Powdercoat
- White Powdercoat

Other Options

- 10k Jack (Bumper Pull)
- Plate for Winch
- 12" oc Crossmembers
- 2 D-Rings
- 2" Pipetop Removable Siderails
- Steel Floor
- Spare Tire Mount
- Spare Tire and Mount
- 16"oc Crossmembers

* denotes a standard feature

Weights

Length	Axles	Est. Base Weight†
18'	2 - 3,500	2360 lbs / 1070 kg
20'	2 - 3,500	2500 lbs / 1134 kg

† Weights are estimated for base trailer only, PJ Trailers makes no guarantee regarding the accuracy of estimated weights

NOW EQUIPPED WITH



DEXTER AXLES



6" Channel Super-Wide (B6)

B6



GOOSENECK
AVAILABLE

DRIVE-OVER
FENDERS



LED LIGHTS Lengths
16 - 24'

102" x 22' (B6) Pictured

Standard Features

- 14,000 lb. G.V.W.R.
- 7,000 lb. x 2 G.A.W.R.
- 2 5/16" Ball Adjustable Coupler
- Safety Chains
- 1 - Drop Leg Jack (10,000 lb.)
- 2 - Dexter E-Z lube Brake Axles (7,000 lb.)
- 6 Leaf Slipper Spring Suspension
- 4 - 16" White Spoke Wheels
- 4 - 235/80R16 Radial Tires (3,520 lb.)
- Electric Breakaway Kit w/ Charger
- 5' Channel Ramps w/ Holder
- Rear Trailer Support Jacks
- 6" Channel Frame & Tongue
- 3" Channel Crossmembers 16" on Center
- 2" Treated Pine Lumber Deck
- 102" Wide Deck
- Sealed Wire Harness w/ 7-Way RV Plug

- Sand Blasted, Acid Washed, Powder Coated
- 4,000 lbs Rated Drive-over fenders
- Rubrail w/Stake Pockets
- Expanded Metal Chain Tray
- DOT Approved Flushmount Lifetime LED Lights

POWDER COATED

At PJ Trailers, every trailer we build is powder coated with Sherwin-Williams™ Powder Coat. A powder coat finish is far superior to conventional paint. It is extremely durable and does not easily crack, chip, or peel as conventional paint does. Powdercoating also helps prevent rust & corrosion making it the longest lasting and most durable finish on the market.

Coupler Options

- BP 2 5/16" Adjustable (14,000 lb.) *
- BP 2 5/16" Adjustable Rigid Mount (25,000 lb.)
- GN 2 5/16" Round (30,000 lb.) w/ Toolbox
- GN Load-Leveling 2 5/16" Square (30,000 lb.) & Tbx
- 3" Pintle Eye - Channel-mount (20,000 lb.)
- GN 2 5/16" Square (30,000 lb.) w/ Toolbox
- GN 2 5/16" Round (25,000 lb.) w/ Toolbox
- GN 2 5/16" Square (25,000 lb.) w/ Toolbox
- HD 2 5/16" Adjustable Channel Mount 3 Bolt Coupler

Axle Options

- (2) 5,200# Electric / Spring
- (2) 7,000# Electric / Spring *
- (2) 7,000# Load Range G 14ply Tires Electric / Spring

Tail Options

- Straight deck w/ 5' Slide-in Ramps *
- 2' Dovetail w/ 5' Slide-in Ramps
- 2' Dovetail w/ 5' Fold-up Ramps
- Straight deck w/ 5' Fold-up Ramps
- 2' Dovetail w/ HD Fold-up Ramps
- 4' Dovetail w/ 5' Slide-in Ramps
- 4' Dovetail w/ 5' Fold-up Ramps
- 2' Dovetail w/ 3 5' Fold-up Ramps
- Straight Deck w/ 4' Heavy Duty Fold-up Gate
- 2' Dovetail w/ 4' Heavy Duty Fold-up Gate
- 2' Dovetail w/ Split Heavy Duty Gate
- 2' Dovetail w/ 5' Double Hinge Fold-up Ramps
- 2' Dovetail w/ 5' Rear Slide-in Ramps
- 4' Dovetail w/ 5' Rear Slide-in Ramps
- Straight Deck w/ Rear Slide-in Ramps
- Straight deck w/ HD Fold-up Ramps
- 4' Dovetail w/ Split Heavy Duty Gate
- 4' Dovetail w/ HD Fold-up Ramps
- 4' Dovetail w/ 5' Double Hinge Fold-up Ramps
- Straight deck w/ 3 5' Fold-up Ramps

Color Options

- Black Powdercoat *
- Equipment Yellow Powdercoat
- Grey Powdercoat
- Red Powdercoat
- White Powdercoat

Other Options

- Cold Weather Wiring Harness (7-Way RV)
- 2nd Jack (Bumper Pull)
- Plate for Winch
- 6" Taller GN Riser
- Douglas Fir Lumber
- ¼" Diamond Plate Steel Floor ²
- 9,990 G.V.W.R.
- 12"oc Crossmembers
- 1 Pair D-Rings
- Rough Oak Floor
- Receiver Hitch
- Goodyear 14 Ply Tire **MUST ADD TO REG 14 PLY COST**
- 2 3/8" Removable Pipetop on Siderails
- 1 1/2 ga Diamond Plate Steel Floor & 4 D-Rings
- Front Toolbox (Bumper Pull)
- Mount Only for Spare Tire
- Spare Tire and Mount (Bumper Pull)
- Deck on the Neck (GN Only)
- Rear Trailer Support Jacks
- Winch 12VDC (12,000 lb.) Incl. Front Toolbox
- 2-speed Jack (12,000 lb.)

* denotes a standard feature

Weights

Length	Axles	Est. Base Weight _t
22'	2 - 7,000	3750 lbs / 1701 kg

† Weights are estimated for base trailer only, PJ Trailers makes no guarantee regarding the accuracy of estimated weights

NOW EQUIPPED WITH



DEXTER AXLES



8" Channel Super-Wide (B8)

B8



LED LIGHTS Lengths
20 - 44'

102" x 30' (B8) with Optional Spare Tire & Mount Pictured

Standard Features

- 14,000 lb. G.V.W.R.
- 7,000 lb. x 2 G.A.W.R.
- 2 5/16" Ball A-Frame Coupler
- Safety Chains
- 1 - Drop Leg Jack (10,000 lb.)
- 2 - Dexter E-Z lube Brake Axles (7,000 lb.)
- 6 Leaf Slipper Spring Suspension
- 4 - 16" White Spoke Wheels
- 4 - 235/80R16 Radial Tires (3,520 lb.)
- Stake Pockets
- Electric Breakaway Kit w/ Charger
- 5' Channel Ramps w/ Holder
- Rear Trailer Support Stands
- Front Toolbox (GN Only)
- 8" Channel Frame & Tongue
- 3" Channel Crossmembers 16" on Center
- 102" Wide Rail to Rail

- 2" Treated Pine Lumber Deck
- DOT Approved Flushmount Lifetime LED Lights
- Sealed Wire Harness w/ 7-Way RV Plug
- Sand Blasted, Acid Washed, Powder Coated
- Expanded Metal Chain Tray (Bumper Pull)

POWDER COATED

At PJ Trailers, every trailer we build is powder coated with Sherwin-Williams™ Powder Coat. A powder coat finish is far superior to conventional paint. It is extremely durable and does not easily crack, chip, or peel as conventional paint does. Powdercoating also helps prevent rust & corrosion making it the longest lasting and most durable finish on the market.

Coupler Options

- BP 2 5/16" Adjustable (14,000 lb.) *
- BP 2 5/16" Adjustable Rigid Mount (25,000 lb.)
- GN 2 5/16" Round (30,000 lb.) w/ Toolbox
- GN Load-Leveling 2 5/16" Square (30,000 lb.) & Tbx
- 3" Pintle Eye - Channel-mount (20,000 lb.)
- GN 2 5/16" Square (30,000 lb.) w/ Toolbox
- GN 2 5/16" Round (25,000 lb.) w/ Toolbox
- GN 2 5/16" Square (25,000 lb.) w/ Toolbox
- HD 2 5/16" Adjustable Channel Mount 3 Bolt Coupler

Axle Options

- (2) 7,000# Electric / Spring *
- (2) 7,000# Elec/Hyd Drum (1,000 PSI Pump) / Spring
- (2) 7,000# Elec/Hyd Disk (1,600 PSI Pump) / Spring
- (3) 7,000# Electric / Spring
- (3) 7,000# Elec/Hyd Disk (1,600 PSI Pump) / Spring
- (2) 7,000# Load Range G 14ply Tires Electric / Spring
- (2) 7,000# LR G 14ply Tires Elec/Hyd Drum (1,000 PSI)/Spring
- (2) 7,000# LR G 14ply Tires Elec/Hyd Disk (1,600 PSI)/Spring
- (3) 7,000# LR G 14ply Tires Electric / Spring
- (3) 7,000# LR G 14ply Tires Elec/Hyd Disk (1,600 PSI)/Spring

Tail Options

- Straight deck w/ 5' Slide-in Ramps *
- 2' Dovetail w/ 5' Slide-in Ramps
- 2' Dovetail w/ 5' Fold-up Ramps
- Straight deck w/ 5' Fold-up Ramps
- 2' Dovetail w/ HD Fold-up Ramps
- 4' Dovetail w/ 5' Slide-in Ramps
- 4' Dovetail w/ 5' Fold-up Ramps
- 2' Dovetail w/ 3 5' Fold-up Ramps
- Straight Deck w/ 4' Heavy Duty Fold-up Gate
- 2' Dovetail w/ 4' Heavy Duty Fold-up Gate
- 2' Dovetail w/ Split Heavy Duty Gate
- 2' Dovetail w/ 5' Dbl Hinge Fold-up Ramps
- 2' Dovetail w/ 5' Rear Slide-in Ramps
- 4' Dovetail w/ 5' Rear Slide-in Ramps
- Straight Deck w/ Rear Slide-in Ramps
- Straight deck w/ HD Fold-up Ramps
- 4' Dovetail w/ Split Heavy Duty Gate
- 4' Dovetail w/ HD Fold-up Ramps
- 4' Dovetail w/ 5' Dbl Hinge Fold-up Ramps
- Straight deck w/ 3 5' Fold-up Ramps

Weights

Length	Axles	Est. Base Weight†
24'	2 - 7,000	4680 lbs / 2123 kg
24' GN	2 - 7,000	5280 lbs / 2395 kg

† Weights are estimated for base trailer only, PJ Trailers makes no guarantee regarding the accuracy of estimated weights

NOW EQUIPPED WITH



Triple Axle Hot-Shot Trailer

Other Options

- Cold Weather Wiring Harness (7-way RV)
- 2nd Jack (Bumper Pull)
- Plate for Winch
- 6" Taller GN Riser
- Douglas Fir Lumber
- 1/4" Diamond Plate Steel Floor ²
- 9,990 G.V.W.R.
- 12"oc Crossmembers
- 1 Pair D-Rings
- Rough Oak Floor
- Hydraulic Jacks (12,000 lb.) Incl. Small Toolbox ²
- Receiver Hitch
- Goodyear 14 Ply Tire (add to 14ply axle option)
- 2 3/8" Removable Pipetop on Siderails
- 1 ga Diamond Plate Steel Floor & 4 D-Rings
- Front Toolbox (Bumper Pull)
- Mount Only for Spare Tire
- Spare Tire and Mount (Bumper Pull)
- Deck on the Neck (GN Only)
- Rear Trailer Support Jacks
- Winch 12VDC (12,000 lb.) Incl. Front Toolbox
- 2-speed Jacks (12,000 lb.)

* denotes a standard feature



Angle Pipetop (P7)

P7



LED LIGHTS Lengths
16' - 20'

Standard Features

- 9,990 lb. G.V.W.R.
- 5,200 lb. x 2 G.A.W.R.
- 2 5/16" Ball Coupler
- Safety Chains
- 1 - Jack (7,000 lb.)
- 2 - Dexter E-Z lube Brake Axles (5,200 lb.)
- 6 Leaf Slipper Spring Suspension
- 4 - 15" White Spoke Wheels
- 4 - 225/75R15 Radial Tires
- Electric Breakaway Kit w/ Charger
- 5' Channel Ramps w/ Holder
- 2x3 Angle Upright
- 2 7/8 Pipe Top Rail
- 5" Channel Tongue & 3" x 5" Angle Frame
- 2x3 Angle 24" on Center
- 2" Treated Pine Lumber Deck
- Sealed Wire Harness
- Sand Blasted, Acid Washed, Powder Coated
- DOT Approved Flushmount Lifetime LED Lights



At PJ Trailers, every trailer we build is powder coated with Sherwin-Williams™ Powder Coat. A powder coat finish is far superior to conventional paint. It is extremely durable and does not easily crack, chip, or peel as conventional paint does. Powdercoating also helps prevent rust & corrosion making it the longest lasting and most durable finish on the market.

Coupler Options

- BP 2 5/16" A-Frame *
- BP 2 5/16" Adjustable

Axle Options

- (2) 5,200# Electric / Spring *
- (2) 5,200# One Electric / Spring

Tail Options

- Straight deck w/ 5' Slide-in Ramps *
- Straight deck w/ 5' Fold-up Ramps

Color Options

- Black Powdercoat *
- Equipment Yellow Powdercoat
- Grey Powdercoat
- Red Powdercoat
- White Powdercoat

Other Options

- Upgrade to 3" X 3" Square Tubing Top Rail
- 2x3 Angle 16" on Center Upgrade
- 1 Pair D-Rings
- Receiver Hitch
- Spare Tire Mount
- Spare Tire and Mount

* denotes a standard feature



AIR RIDE SUSPENSION AVAILABLE

Weights

Length	Axles	Est. Base Weight†
16'	2 - 5,200	2420 lbs / 1098 kg
18'	2 - 5,200	2590 lbs / 1175 kg
20'	2 - 5,200	2760 lbs / 1252 kg

NOW EQUIPPED WITH



† Weights are estimated for base trailer only, PJ Trailers makes no guarantee regarding the accuracy of estimated weights



Angle Pipetop (P8)

P8



Lengths
16' - 20'

Standard Features

- 14,000 lb. G.V.W.R.
- 7,000 lb. x 2 G.A.W.R.
- 2 5/16" Ball Coupler
- Safety Chains
- 1 - Jack (7,000 lb.)
- 2 - Dexter E-Z lube Brake Axles (7,000 lb.)
- 6 Leaf Slipper Spring Suspension
- 4 - 16" White Spoke Wheels
- 4 - 235/80R16 Radial Tires (3,520 lb.)
- Electric Breakaway Kit w/ Charger
- 5' Channel Ramps w/ Holder
- 2x3 Angle Upright
- 2 7/8 Pipe Top Rail
- 5" Channel Tongue & 3" x 5" Angle Frame
- 3" Channel Crossmembers 16" on Center
- 2" Treated Pine Lumber Deck
- Sealed Wire Harness
- Sand Blasted, Acid Washed, Powder Coated
- DOT Approved Flushmount Lifetime LED Lights



At PJ Trailers, every trailer we build is powder coated with Sherwin-Williams™ Powder Coat. A powder coat finish is far superior to conventional paint. It is extremely durable and does not easily crack, chip, or peel as conventional paint does. Powdercoating also helps prevent rust & corrosion making it the longest lasting and most durable finish on the market.

Coupler Options

- BP 2 5/16" Adjustable (14,000 lb.) *
- Rigid mount 2-5/16 (25,000 lb.)
- GN 2 5/16" Round (30,000 lb.) w/ Toolbox
- GN Load-Leveling 2 5/16" Square (30,000 lb.) & Tbx
- 3" Pintle Eye - Channel-mount (21,000 lb.)
- GN 2 5/16" Square (30,000 lb.) w/ Toolbox
- GN 2 5/16" Round (25,000 lb.) w/ Toolbox
- GN 2 5/16" Square (25,000 lb.) w/ Toolbox

Axle Options

- (2) 5,200# Electric / Spring
- (2) 5,200# One Electric / Spring
- (2) 7,000# Electric / Drop
- (2) 7,000# Electric / Spring *
- (2) 7,000# Electric / Torsion
- (2) 7,000# One Electric / Spring
- (2) 7,000# Elec/Hyd Disk / Spring
- (2) 7,000# Oil Bath/Drum Brake / Spring
- (2) 7,000# Dexter Electric / Spring
- (2) 7,000# Dexter Electric / Torsion
- (2) 7,000# Load Range G 14ply Tires Electric / Spring
- (2) 7,000# Load Range G 14ply Tires Electric / Torsion
- (2) 7,000# Load Range G 14ply Tires Hydraulic Drum / Spring
- (2) 7,000# Load Range G 14ply Tires Elec/Hyd Disk / Spring
- (2) 8,000# Oil Bath Axles w / 235-80 Tires Electric / Spring
- (2) 8,000# Load Range G Tires Electric / Spring
- (2) 8,000# Load Range G Tires Electric / Torsion

Tail Options

- Straight deck w/ 5' Slide-in Ramps *

Color Options

- Black Powdercoat *
- Equipment Yellow Powdercoat
- Grey Powdercoat
- Red Powdercoat
- White Powdercoat

Other Options

- 1 Pair D-Rings
- Spare Tire Mount
- Spare Tire and Mount

* denotes a standard feature



AIR RIDE SUSPENSION AVAILABLE

Weights

Length	Axles	Est. Base Weight;
16'	2 - 7,000	2620 lbs / 1188 kg
18'	2 - 7,000	2830 lbs / 1284 kg
20'	2 - 7,000	3050 lbs / 1383 kg
22'	2 - 7,000	3270 lbs / 1483 kg
24'	2 - 7,000	3480 lbs / 1579 kg

NOW EQUIPPED WITH



†Weights are estimated for base trailer only, PJ Trailers makes no guarantee regarding the accuracy of estimated weights



4" Channel Carhauler (C4)

C4



Lengths
14' - 18'

83" x 18' (C4) Pictured

Standard Features

- 7,000 G.V.W.R.
- 7,000 G.A.W.R.
- 2" Ball Coupler
- Safety Chains
- 1 - Pipe Mount Swivel Jack (2,000 lb.)
- 2 - Dexter E-Z lube Idler Axle (3,500 lb.)
- 4 Leaf Double-eye Spring Suspension
- 4 - NEW 15" White Spoke Wheels
- 4 - NEW ST205/75R15 Radials (1,820 lb.)
- Stake Pockets
- 9" x 72" Treadplate Removable Alum. Fenders
- 4" Channel Frame & Tongue
- 2 1/2" x 2 1/2" x 3/16" Angle Crossmembers
- 2" Treated Pine Lumber Deck
- 83" Wide Deck
- DOT Approved Flushmount Lights
- Sealed Wire Harness
- Sand Blasted, Acid Washed, Powder Coated

POWDER COATED

At PJ Trailers, every trailer we build is powder coated with Sherwin-Williams™ Powder Coat. A powder coat finish is far superior to conventional paint. It is extremely durable and does not easily crack, chip, or peel as conventional paint does. Powdercoating also helps prevent rust & corrosion making it the longest lasting and most durable finish on the market.

Coupler Options

- BP 2" A-Frame *
- BP 2 5/16" A-Frame
- BP 2" Adjustable
- BP 2 5/16" Adjustable
- 3" Pintle Eye - Channel-mount

Axle Options

- (2) 3,500# One Electric / Spring *
- (2) 3,500# Idler / Spring
- (2) 3,500# Electric / Spring

Tail Options

- Straight Deck w/ 5' Slide-in Ramps *
- Straight Deck w 4' Fold-up Gate
- Straight Deck w/ 4' Heavy Duty Fold-up Gate
- 2' Dovetail w/ 4' Heavy Duty Fold-up Gate
- 2' Dovetail w/ 5' Slide-in Ramps

Color Options

- Black Powdercoat *
- Equipment Yellow Powdercoat
- Grey Powdercoat
- Red Powdercoat
- Regatta Blue Powdercoat
- Tractor Green Powdercoat
- White Powdercoat

Other Options

- Plate for Winch
- Upgrade to 7k Jack
- 2 D-Rings
- Diamond Plate Steel Fenders
- LED Lights Upgrade
- Rubrail
- Spare Tire Mount
- Rear Trailer Support Jacks
- Spare Tire and Mount
- 16"oc Crossmembers

* denotes a standard feature

Weights

Length	Axles	Est. Base Weight;
14'	2 - 3,500	1640 lbs / 744 kg
16'	2 - 3,500	1720 lbs / 780 kg
18'	2 - 3,500	1800 lbs / 816 kg

NOW EQUIPPED WITH



†Weights are estimated for base trailer only, PJ Trailers makes no guarantee regarding the accuracy of estimated weights



5" Channel Carhauler (C5)

C5



LED LIGHTS Lengths
14' - 20'

83" x 20' (C5) Pictured

Standard Features

- 7,000 lb. G.V.W.R.
- 3,500 lb. x 2 G.A.W.R.
- 2" Ball Coupler
- Safety Chains
- 1 - Pipe Mount Swivel Jack (5,000 lb.)
- 2 - Dexter E-Z lube Axles, Idler & Brake (3,500 lb.)
- 4 Leaf Double-eye Spring Suspension
- 4 - NEW 15" White Spoke Wheels
- 4 - NEW ST205/75R15 Rad. Tires (1,820 lb.)
- Stake Pockets
- Electric Breakaway Kit w/ Charger
- 9" x 72" Treadplate Removable Alum. Fenders
- 5' Channel Ramps w/ Holder
- 5" Channel Frame & Tongue
- 3" Channel Crossmembers 24" on Center

- 2" Treated Pine Lumber Deck
- 83" Wide Deck
- DOT Approved Flushmount Lights
- Sealed Wire Harness
- Sand Blasted, Acid Washed, Powder Coated

POWDER COATED

At PJ Trailers, every trailer we build is powder coated with Sherwin-Williams™ Powder Coat. A powder coat finish is far superior to conventional paint. It is extremely durable and does not easily crack, chip, or peel as conventional paint does. Powdercoating also helps prevent rust & corrosion making it the longest lasting and most durable finish on the market.

Coupler Options

- BP 2" A-Frame *
- BP 2 5/16" A-Frame
- BP 2" Adjustable
- BP 2 5/16" Adjustable
- 3" Pintle Eye - Channel-mount (14,000 lb.)

Axle Options

- (2) 3,500# One Electric / Spring *
- (2) 3,500# One Electric / Torsion
- (2) 3,500# Electric / Spring
- (2) 3,500# Electric / Torsion
- (2) 3,500# Hyd. Drum w/ Surge Coupler / Spring
- (2) 5,200# One Electric / Spring
- (2) 5,200# One Electric / Torsion
- (2) 5,200# Electric / Spring
- (2) 5,200# Electric / Torsion
- (2) 5,200# Hyd. Drum w/ Surge Coupler / Spring

Tail Options

- Straight Deck w/ 5' Slide-in Ramps *
- Straight Deck w 4' Fold-up Gate
- Straight Deck w/ 2 Fold-up Ramps
- Straight Deck w/ 4' Heavy Duty Fold-up Gate
- Straight Deck w/ 4' Split Heavy Duty Gate
- Straight Deck w/ Rear Slide-in Ramps
- 2' Dovetail w/ 2 Fold-up Ramps
- 2' Dovetail w/ 3 Fold-up Ramps
- 2' Dovetail w/ 4' Heavy Duty Fold-up Gate
- 2' Dovetail w/ 5' Rear Slide-in Ramps
- 2' Dovetail w/ 5' Slide-in Ramps
- 2' Dovetail w/ Split Heavy Duty Gate
- 4' Dovetail w/ 2 Fold-up Ramps
- 4' Dovetail w/ 5' Rear Slide-in Ramps
- 4' Dovetail w/ 5' Slide-in Ramps
- 4' Dovetail w/ Split Heavy Duty Gate

Color Options

- Black Powdercoat *
- Equipment Yellow Powdercoat
- Grey Powdercoat
- Red Powdercoat
- Regatta Blue Powdercoat
- Tractor Green Powdercoat
- White Powdercoat

* denotes a standard feature

Weights

Length	Axles	Est. Base Weight;
14'	2 - 3,500	1740 lbs / 789 kg
16'	2 - 3,500	1850 lbs / 839 kg
18'	2 - 3,500	1970 lbs / 894 kg
20'	2 - 3,500	2080 lbs / 943 kg

†Weights are estimated for base trailer only, PJ Trailers makes no guarantee regarding the accuracy of estimated weights

Other Options

- Cold Weather Wiring Harness (Paris Only)
- Upgrade to 225/75 R15 on 3.5k Axles (5.2k Fenders)
- 10k Jack (Bumper Pull)
- Plate for Winch
- Upgrade to 235/80 R16 on 52k Axles
- Upgrade to 7k Jack
- 4ft Expanded Metal Sides
- Side Mount ATV Ramps (12ft or Longer)
- 4ft Solid Metal Sides
- 2 D-Rings
- Diamond Plate Fenders
- 4ft Side Gate (14ft or longer)
- Landscape Toolbox (must have 2ft or 4ft Sides)
- Open Pit Steel Floor
- 2" Pipetop Removable Siderails
- Rubrail
- U8 Side Rail
- 1 1/2" Diamond Plate Steel Floor w/ 4 D-Rings
- Spare Tire Mount
- Rear Trailer Support Jacks
- Spare Tire and Mount
- 16"oc Crossmembers
- 22" Solid Metal Sides w/ 2" pipe-top

NOW EQUIPPED WITH
DEXTER AXLES



6" Channel Custom Carhauler (CC)



Lengths
16' - 24'

Standard Features

- 14,000 lb. G.V.W.R.
- 7,000 lb. x 2 G.A.W.R.
- 2 5/16" Ball Adjustable Coupler
- Safety Chains
- 1 - Drop Leg Jack (10,000 lb.)
- 2 - Dexter E-Z lube Brake Axles (7,000 lb.)
- 6 Leaf Slipper Spring Suspension
- 4 - 16" White Spoke Wheels
- 4 - 235/80R16 Radial Tires (3,520 lb.)
- Stake Pockets
- Electric Breakaway Kit w/ Charger
- 9" x 72" Treadplate Removable Steel Fenders
- 5' Channel Ramps w/ Holder
- Rear Trailer Support Jacks
- Front Toolbox (GN Only)
- 6" Channel Frame & Tongue
- 3" Channel Crossmembers 16" on Center
- 2" Treated Pine Lumber Deck
- 83" Wide Deck (80" w/ Torsion or Drop Axles)
- DOT Approved Flushmount Lifetime LED Lights
- Sealed Wire Harness w/ 7-Way RV Plug
- Sand Blasted, Acid Washed, Powder Coated



At PJ Trailers, every trailer we build is powder coated with Sherwin-Williams™ Powder Coat. A powder coat finish is far superior to conventional paint. It is extremely durable and does not easily crack, chip, or peel as conventional paint does. Powdercoating also helps prevent rust & corrosion making it the longest lasting and most durable finish on the market.

Weights

Length	Axles	Est. Base Weight†
16'	2 - 7,000	2800 lbs / 1270 kg
18'	2 - 7,000	2950 lbs / 1338 kg
20'	2 - 7,000	3100 lbs / 1406 kg
22'	2 - 7,000	3250 lbs / 1474 kg
24'	2 - 7,000	3400 lbs / 1542 kg

† Weights are estimated for base trailer only, PJ Trailers makes no guarantee regarding the accuracy of estimated weights



AIR RIDE SUSPENSION AVAILABLE

NOW EQUIPPED WITH



Other Options

- Cold Weather Wiring Harness (7-Way RV)
- 2nd Jack (Bumper Pull)
- Plate for Winch
- 6" Taller GN Riser
- Douglas Fir Lumber
- 9,990 G.V.W.R.
- Rubrail
- 12" oc Crossmembers
- 1 Pair D-Rings
- Rough Oak Floor
- Drive Over Fenders
- Receiver Hitch
- 2 3/8" Removable Pipetop on Siderails
- Diamond Plate Running Boards
- Steel Floor & 4 D-Rings
- Front Toolbox (Bumper Pull)
- 102" Deck Width
- Mount Only for Spare Tire
- Spare Tire and Mount (Bumper Pull)
- Deck on the Neck (GN Only)
- Rear Trailer Support Jacks
- Winch 12VDC (12,000 lb.) Incl. Front Toolbox
- 2-speed Jacks (12,000 lb.)
- HD Trailer 2x Jacks (25k lb.) No Frt T/box GN Only

Coupler Options

- BP 2 5/16" Adjustable (14,000 lb.) *
- Rigid mount 2-5/16 (25,000 lb.)
- GN 2 5/16" Round (30,000 lb.) w/ Toolbox
- GN Load-Leveling 2 5/16" Square (30,000 lb.) & Tbx
- 3" Pintle Eye - Channel-mount (20,000 lb.)
- GN 2 5/16" Square (30,000 lb.) w/ Toolbox
- GN 2 5/16" Round (25,000 lb.) w/ Toolbox
- GN 2 5/16" Square (25,000 lb.) w/ Toolbox
- HD 2 5/16" Adjustable Channel Mount 3 Bolt Coupler

Axle Options

- (2) 5,200# Electric / Spring
- (2) 5,200# Electric / Torsion
- (2) 5,200# Hydraulic Drum / Spring
- (2) 7,000# Electric / Drop
- (2) 7,000# Electric / Spring *
- (2) 7,000# Electric / Torsion
- (2) 7,000# Hydraulic Drum / Spring
- (2) 7,000# Elec/Hyd Disk / Spring
- (2) 7,000# Oil Bath/Drum Brake / Spring
- (3) 7,000# Electric / Spring
- (3) 7,000# Electric / Torsion
- (3) 7,000# Elec/Hyd Disk / Spring
- (2) 8,000# Oil Bath Axles w / 235-80 Tires Electric / Spring
- (2) 8,000# Load Range G Tires Electric / Spring
- (2) 8,000# Load Range G Tires Electric / Torsion
- (3) 8,000# Load Range G Tires Electric / Spring

Tail Options

- Straight deck w/ 5' Slide-in Ramps *
- Straight Deck w/ 4' Heavy Duty Fold-up Gate
- Straight deck w/ 5' Fold-up Ramps
- Straight deck w/ HD Fold-up Ramps
- Straight Deck w/ Rear Slide-in Ramps
- 2' Dovetail w/ 3 5' Fold-up Ramps
- 2' Dovetail w/ 5' Double Hinge Fold-up Ramps
- 2' Dovetail w/ 5' Fold-up Ramps
- 2' Dovetail w/ 5' Slide-in Ramps
- 2' Dovetail w/ 5' with Rear Slide-in Ramps
- 2' Dovetail w/ HD Fold-up Ramps
- 2' Dovetail w/ Split Heavy Duty Gate
- 2" Dovetail w/ 4' Heavy Duty Fold-up Gate
- 4' Dovetail w/ 5' Double Hinge Fold-up Ramps
- 4' Dovetail w/ 5' Fold-up Ramps
- 4' Dovetail w/ 5' Slide-in Ramps
- 4' Dovetail w/ 5' with Rear Slide-in Ramps
- 4' Dovetail w/ HD Fold-up Ramps

Color Options

- Black Powdercoat *
- Equipment Yellow Powdercoat
- Grey Powdercoat
- Red Powdercoat
- White Powdercoat

* denotes a standard feature



8" Channel Carhauler (C8)

C8



Lengths
20' - 40'

Standard Features

- 14,000 lb. G.V.W.R.
- 7,000 lb. x 2 G.A.W.R.
- 2 5/16" Ball A-Frame Coupler
- Safety Chains
- 1 - Drop Leg Jack (10,000 lb.)
- 2 - Dexter E-Z lube Brake Axles (7,000 lb.)
- 6 Leaf Slipper Spring Suspension
- 4 - 16" White Spoke Wheels
- 4 - 235/80R16 Radial Tires (3,520 lb.)
- Stake Pockets
- Electric Breakaway Kit w/ Charger
- 9" x 72" Treadplate Removable Steel Fenders
- 5' Channel Ramps w/ Holder
- Rear Trailer Support Stands
- Front Toolbox (GN Only)
- 2" Treated Pine Lumber Deck
- 83" Wide Deck (80" w/ Torsion Axles)
- DOT Approved Flushmount Lifetime LED Lights
- Sealed Wire Harness
- Sand Blasted, Acid Washed, Powder Coated



At PJ Trailers, every trailer we build is powder coated with Sherwin-Williams™ Powder Coat. A powder coat finish is far superior to conventional paint. It is extremely durable and does not easily crack, chip, or peel as conventional paint does. Powdercoating also helps prevent rust & corrosion making it the longest lasting and most durable finish on the market.

Coupler Options

- BP 2 5/16" Adjustable (14,000 lb.) *
- Rigid mount 2-5/16 (25,000 lb.)
- GN 2 5/16" Round (30,000 lb.)
- GN Load-Leveling 2 5/16" Square (30,000 lb.)
- 3" Pintle Eye - Channel-mount (21,000 lb.)
- GN 2 5/16" Square (30,000 lb.)
- GN 2 5/16" Round (25,000 lb.)
- GN 2 5/16" Square (25,000 lb.)

Axle Options

- (2) 7,000# Elec / Drop
 - (2) 7,000# Elec / Spring *
 - (2) 7,000# Elec / Torsion**
 - (2) 7,000# Elec/Hyd Disk / Spring
 - (3) 7,000# Elec / Spring
 - (3) 7,000# Elec / Torsion**
 - (3) 7,000# Elec/Hyd Disk / Spring
 - (2) 7,000# 14Ply Tires Elec / Spring
 - (2) 7,000# 14Ply Tires Elec / Torsion**
 - (2) 7,000# 14Ply Tires Elec/Hyd Disk / Spring
 - (3) 7,000# 14Ply Tires Elec / Spring
 - (3) 7,000# 14Ply Tires Elec / Torsion**
 - (3) 7,000# 14Ply Tires Elec/Hyd Disk / Spring
 - (2) 8,000# 14Ply Tires Elec / Spring**
 - (3) 8,000# 14Ply Tires Elec / Spring**
- ** (note only 80" between fenders on CH)

Tail Options

- Straight deck w/ 5' Slide-in Ramps *
- 2' Dovetail w/ 5' Slide-in Ramps
- 2' Dovetail w/ 5' Fold-up Ramps
- Straight deck w/ 5' Fold-up Ramp

Color Options

- Black Powdercoat *
- Equipment Yellow Powdercoat
- Grey Powdercoat
- Red Powdercoat
- White Powdercoat

Other Options

- 2nd Jack (Bumper Pull)
- Plate for Winch
- 6" Taller GN Riser
- 9,990 G.V.W.R.
- Rubrail
- 12" oc Crossmembers
- 1 Pair D-Rings
- Oak Floor
- Drive Over Fenders
- Hydraulic Jacks (12,000 lb.)
- Receiver Hitch
- LED Light Package
- 2 3/8" Removable Pipetop on Siderails
- Diamond Plate Running Boards
- Steel Floor & 4 D-Rings
- 102" Deck Width
- Mount Only for Spare Tire
- Spare Tire and Mount (Bumper Pull)
- Deck on the Neck (GN Only)
- Winch 12VDC (12,000 lb.)
- 2-speed Jacks (12,000 lb.)
- 2-speed Jacks, (12,000 lb.) No Front Toolbox

Weights

Length	Axles	Est. Base Weight;
20'	2 - 7,000	3340 lbs / 1515 kg
22'	2 - 7,000	3530 lbs / 1601 kg
24'	2 - 7,000	3720 lbs / 1687 kg
26'	2 - 7,000	3910 lbs / 1774 kg
28'	2 - 7,000	4100 lbs / 1860 kg
30'	2 - 7,000	4300 lbs / 1950 kg
32'	2 - 7,000	4490 lbs / 2037 kg
34'	2 - 7,000	4680 lbs / 2123 kg

† Weights are estimated for base trailer only, PJ Trailers makes no guarantee regarding the accuracy of estimated weights



AIR RIDE SUSPENSION AVAILABLE

NOW EQUIPPED WITH



* denotes a standard feature



Light Duty Deckover 5" Channel (L5)

L5



Lengths
16' - 20'



Coupler Options

- BP 2 5/16" Adjustable (14,000 lb.) *
- 3" Pintle Eye - Channel-mount (21,000 lb)

Axle Options

- (2) 3,500# Electric / Spring *

Tail Options

- Straight Deck w/ 6'6" Slide-in Ramps *

Other Options

- 1 Pair D-Rings
- Spare Tire and Mount (Bumper Pull)
- V Shape Front Deck

* denotes a standard feature

Weights

Length	Axles	Est. Base Weight _t
16'	2 - 3,500	2500 lbs / 1134 kg
18'	2 - 3,500	2660 lbs / 1207 kg
20'	2 - 3,500	2800 lbs / 1270 kg

†Weights are estimated for base trailer only, PJ Trailers makes no guarantee regarding the accuracy of estimated weights

Standard Features

- 7,000 lb. G.V.W.R.
- 3,500 lb. x 2 G.A.W.R.
- 2 5/16" Adjustable Ball Coupler
- Safety Chains
- 1 - Drop Leg Jack (7,000 lb.)
- 2 - Dexter E-Z lube Brake Axles (3,500 lb.)
- 6 Leaf Slipper Spring Suspension
- 4 - 15" White Spoke Wheels
- 4 - 205/75R15 Radial Tires (1,800 lb.)
- Rubrail & Stake Pockets
- Electric Breakaway Kit w/ Charger
- DOT Reflective Tape
- 6' Slide in Ramps w/ Holders
- 5" Channel Tongue
- 5" Channel Frame Main Frame
- 3x2" Angle Channel Crossmembers 16" on Center • 2" Treated Pine Lumber Deck
- 101" Wide Deck
- DOT Approved Flushmount Lifetime LED Lights
- Sealed Wire Harness
- Sand Blasted, Acid Washed, Powder Coated



Medium Duty Deckover 6" Channel (L6)

L6



Lengths
16' - 20'



Coupler Options

- BP 2 5/16" Adjustable (14,000 lb.) *
- 3" Pintle Eye - Channel-mount (21,000 lb)

Axle Options

- (2) 5,200# Electric / Spring *

Tail Options

- Straight Deck w/ 6'6" Slide-in Ramps *

Other Options

- 1 Pair D-Rings
- Spare Tire and Mount (Bumper Pull)
- V Shape Front Deck

* denotes a standard feature

Weights

Length	Axles	Est. Base Weight _t
16'	2 - 5,200	2820 lbs / 1279 kg
18'	2 - 5,200	2980 lbs / 1352 kg
20'	2 - 5,200	3020 lbs / 1370 kg

†Weights are estimated for base trailer only, PJ Trailers makes no guarantee regarding the accuracy of estimated weights

Standard Features

- 9,990 lb. G.V.W.R.
- 5,200 lb. x 2 G.A.W.R.
- 2 5/16" Adjustable Ball Coupler
- Safety Chains
- 1 - Drop Leg Jack (7,000 lb.)
- 2 - Dexter E-Z lube Brake Axles (5,200 lb.)
- 6 Leaf Slipper Spring Suspension
- 4 - 15" White Spoke Wheels
- 4 - 225/75R15 Radial Tires
- Rubrail & Stake Pockets
- Electric Breakaway Kit w/ Charger
- DOT Reflective Tape
- 6' Slide in Ramps w/ Holders
- 6" Channel Tongue
- 6" Channel Frame Main Frame
- 3x2" Angle Channel Crossmembers 16" on Center
- 2" Treated Pine Lumber Deck
- 101" Wide Deck
- DOT Approved Flushmount Lifetime LED Lights
- Sealed Wire Harness
- Sand Blasted, Acid Washed, Powder Coated



Car haulers & Equipment Options Guide

(some options not shown, please view the product page for a list of all options)

Coupler Options



Bumper Pull



3" Pintle Eye

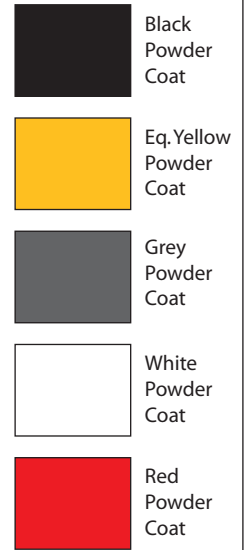


8" I-Beam Gooseneck (CC)



12" I-Beam Gooseneck (C8)
24+ ft only

Color Options



(actual color may vary)

Tail Options



Straight deck w/ 5' Slide-in Ramps



2' Dovetail w/ 5' Slide-in Ramps



Straight deck w/ 5' Fold-up Ramps



2' Dovetail w/ 5' Fold-up Ramps

Other Options



Receiver Hitch



Rubrail



Winch 12VDC (12,000 lb.)



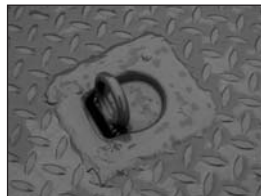
Deck on the Neck (GN Only)



1 Pair D-Rings



Rough Oak Floor



Steel Floor & 4 D-Rings



Spare Tire Mount



Diamond Plate Running Boards



2 3/8" Pipetop Removable Siderails (CC, C8)



TRAILER FLEX TrailerFlex Air Ride Suspension



2' Dovetail w/ HD Fold-up Ramps



PJ TRAILERS

- #1 Professional Grade Open Trailer Manufacturer
- Broad Line of Dumps, Flatdecks, Utilities, Tilts & Equipment Trailers
- Over 300 Independent PJ Trailers Dealer Locations in the US & Canada

Visit Us Online at www.pjtrailers.com