

DARE TO COMPARE *GOOSENECKS*

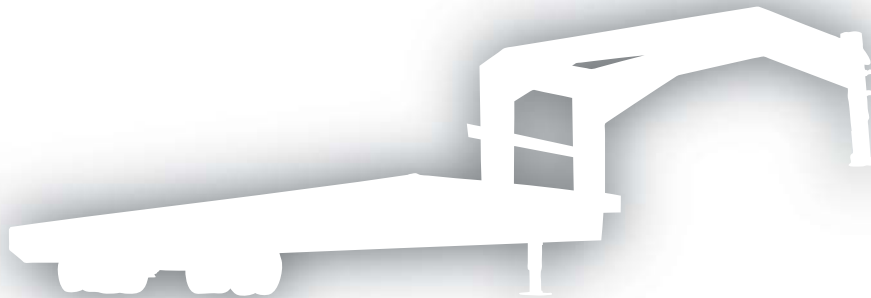


DARE TO COMPARE

GOOSENECKS



VS



PJ GOOSENECK COMPARISON

THE OTHER GUYS



3 Year Frame/1 Year Limited Warranty

The industry standard frame warranty for a gooseneck is one (1) year. We believe so strongly in our frame strength that we offer a three (3) year frame warranty on every PJ gooseneck trailer.



1 Year Warranty



I-beam Goosenecks & Risers

When you order a PJ Gooseneck it comes with an 12" I-beam neck and riser. Our I-beam necks are simply stronger and last longer than the commonly used c-channel necks. At PJ Trailers we feel that an I-beam gooseneck should be standard, not an "upgrade".



C-Channel

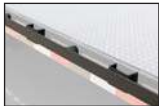


Lifetime LED Lights

Every PJ gooseneck trailer features Lifetime LED lights standard. LED lights are not only brighter but they are also faster, draw less current, and last longer than incandescent lights. Our LED lights are so reliable they feature a lifetime warranty.



Incandescent Lights



Rub Rail with Stake Pockets & Pipe Spools

Our standard 2" x 3/8" rub rail includes both stake pockets and pipe spools on 12" centers. These give you almost unlimited tie down points, while also strengthening the rub rail.



2" x 1/4" Rail (no pipe spools)



3" Channel Cross-members on 16" Centers

We use 3" channel for all gooseneck cross-members for increased deck strength. We also keep our cross-members spaced tightly together (16" or less). Many manufacturers use lighter cross-members and spread them further apart to try to cut costs.



20-24" On Center Cross-members



6" x 2" Tube Outside Frame

Anyone that has owned a gooseneck trailer understands the importance of protecting your wiring and lighting. Our outside frame is made of 6" x 2" rectangular tubing, not channel. This allows your wiring and lights to be fully enclosed and protected from debris and the elements. This feature is even more important if you use your trailer off-road or live in a cold-weather region. The tube outside frame also increases the structural rigidity of the trailer, making it significantly stronger than channel.



5" C-channel



Under Frame Bridging

Our 30 foot and longer goosenecks receive standard under frame bridging, which is a 2" x 3/8" flat that spans the bottom of the trailer frame. This feature minimizes frame sag under heavy loads.



Not Available



Retail Financing Promotions

We offer factory sponsored retail financing promotions through Sheffield Financial. These promotions typically include Zero Down and/or low interest rates.



No Financing Promotions



21" Wide Flip-over Ramps

Our flip-over ramps are a generous 21" wide, versus the typical 16-18" wide ramps. This makes the ramps much easier and safer to use when loading equipment. Our self-cleaning angle cross-members are angled upwards and sit slightly above the outside frame for maximum traction.



16-18" Wide Ramps



Diamond Plate Locking Front Toolbox

Every PJ Gooseneck comes standard with a front locking toolbox made of steel diamond plate. This gives you ample room for carrying straps, binders, and tools. We also include a chain rack in the rear of each box to store chains and straps.



No Toolbox



Radial Tires

Radial tires are superior to bias ply tires in many ways. Radial tires feature better fuel economy, less vibration, a softer ride, and extended life due to less heat being generated by the tire. Radial tires are especially important for gooseneck equipment trailers due to some of the heavy loads they must handle.



Bias Ply Tires



Bulldog Coupler

Every PJ gooseneck receives a Bulldog™ coupler as a standard feature. These couplers are height adjustable to allow you to level the trailer with the towing vehicle. The Bulldog™ coupler has a well-earned reputation for being the toughest, most durable gooseneck coupler in the trailer industry.



Lesser Quality Couplers



Riser Gussets and Front Bumper

Our riser gussets and formed front bumper are signature features of a PJ Trailer. They not only add considerable strength to the gooseneck but also help protect your cargo and frame.



5" Channel Bumper No Gussets



Pressure Treated Lumber

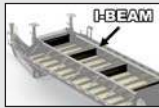
Every PJ gooseneck receives treated no. 2 southern yellow pine for decking. This pressure treated lumber is known for its high strength and durability. We also offer Douglas Fir and Rough Oak decking.



Untreated Lumber

PJ GOOSENECK COMPARISON

THE OTHER GUYS



YES

I-beam Cross-beams

Our gooseneck frames include beefy 10" x 12 lb I-beam cross-beams every five feet for maximum frame strength. Other manufacturers rely on 2 3/8" pipe to connect the main frame rails. These huge cross-beams significantly reduce trailer torque and frame twist.

NO
2 3/8" Pipe



YES

Dual Spring Loaded Drop Leg Jacks

Our gooseneck trailers are equipped with two drop leg jacks that are spring loaded, saving you time and energy. When parking your trailer you simply pull the foot pin and press the jack foot to the ground, instead of having to crank to lower the jack foot. The spring loaded foot also quickly retracts to the up position to save even more time and energy.

NO
Single Jack, Not Spring Loaded



YES

Double Hinge Ramps

Our flip over ramps feature double hinges allowing the ramp to fold flat across the deck. This also allows the entire ramp to sit flat across the ground when loading, maximizing the strength of the ramp. Single hinge ramps either have a large bump to drive over or do not lay flat when stored.

NO
Single Hinge, No Spring Assist



YES

Junction Box Wiring

Every PJ gooseneck is wired with a weather proof junction box standard. This keeps your wiring clean and well protected from the elements. If you were to damage the front harness or plug, a junction box makes replacing the plug a simple task.

NO
Spliced Wiring



YES

Sealed Wiring Harness Inside Steel Conduit

Trailer wiring issues are one of the top complaints for many gooseneck trailer owners. This is why we use a sealed wiring harness to protect our wiring from water, dirt, and corrosion. The harness is enclosed in steel conduit throughout the frame of the trailer, to further protect the wiring from ice, road debris, and physical damage. This modular harness means each light is just simply plugged in, making replacement very easy.

NO
Exposed Wiring



YES

4" x 8" Tube Rear Bumpers

Our dovetail rear bumpers are made of tubing instead of a c-channel to protect the lights and wiring from road debris, ice, and physical damage. Other manufacturers use a c-channel bumper to save a few dollars, leaving the wiring completely exposed to the elements.

NO
6-8" Channel



YES

Flush-mount Lighting

All of our gooseneck trailer lights are "flush-mounted" inside the frame of the gooseneck. Surface mounted lights are much more susceptible to damage, corrosion, and failure.

NO
Surface Mount Lighting



YES

NATM Compliant

Our gooseneck trailers are built in compliance with the National Association of Trailer Manufacturers trailer safety regulations. Be very wary of any manufacturer that does not comply with NATM safety standards.

NO
Non-compliant



YES

Bargman 7-Way Plugs

All PJ gooseneck trailers include a Bargman 7-way plug. These plugs are designed with dual contacts for a more reliable connection. They also include an auxiliary wire that can be used to operate work lights, reverse lights, & charging.

NO
Poor fitting single contact 7-way plugs



YES

The Professional's Choice

At PJ Trailers we think our best "advertising" comes from job sites and coffee shops, not on billboards and television ads. We didn't "buy" our reputation for building great trailers, we built it - one trailer at a time. Building a great product and keeping our customers happy has made us the #1 professional grade open trailer manufacturer in the US.

NO



YES

Frame Strength

If you want a gooseneck that lasts, it has to be built on a rock solid frame. Other trailer builders attempt to cut their cost by skimping on frame materials (smaller channel & beam, fewer welds, less cross-members). Our goosenecks take frame strength to the next level and we have the warranty to prove it.

NO



YES

Spring Assist Ramps

A key trademark of a PJ Gooseneck is our heavy duty ramps. To offset the weight from their heavy construction & wide design, our flip-over ramps include a spring assist feature. This allows the ramps easily be lifted and lowered, with minimum effort.

NO
No Spring Assist



YES

Low Profile Designs

One of the most popular innovations in the gooseneck market is the low profile gooseneck. The main I-beam frame of the trailer is "pierced" with 3" channel cross-members running through the frame. This allows the deck to be a full 5 inches lower than a standard tandem dual gooseneck. Lower deck heights make for easier loading, a lower center of gravity, and the ability to carry taller loads.

NO
Not Available



YES

CNC Plasma Cut Components

We fabricate many of our frame components on CNC plasma tables. This allows for excellent finish to each component, consistent fit, and smooth operation. It also gives us the ability to customize the exact component we need for each model, instead of being forced to use "off the shelf" components.

NO

COMPARISON CONTINUES

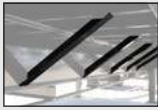
PJ GOOSENECK COMPARISON

THE OTHER GUYS



Dealer Network

When shopping for a gooseneck trailer one thing to take into consideration is the size and quality of the dealer network that will provide support for the manufacturer. PJ Trailers has a network of over 250 dealers that is well known for offering excellent service and support.



Critical Frame Reinforcements

Gooseneck trailers require special reinforcements throughout the entire trailer due to the massive amounts of stress the frame receives under load. We reinforce the high stress areas with techniques including extra gussets, I-beam, and angle cross-member supports.



Resale Value

If you have ever shopped for a used PJ gooseneck you might be surprised how close the price can be to a new trailer. Our premium components and overall build quality makes for a trailer that ages well and will retain much of its original value.



Hydraulic Jacks Available

Our self-contained hydraulic trailer jacks raise and lower your gooseneck trailer at the touch of a button. Hydraulic jacks will save you a lot of time and even more energy. Most other gooseneck manufacturers don't even offer this option. If you use your gooseneck trailer daily or weekly, we highly recommend the hydraulic jack option.



Not Available



Air Suspension Available

We have pioneered air ride suspension market for gooseneck trailers. No other gooseneck air ride system has been as widely accepted and respected as our air ride suspension.



Not Available



Hydraulic Dovetail Available

At PJ Trailers we not only created the first gooseneck hydraulic dovetail, we perfected it. Our 10' dovetail makes it extremely quick to load and unload heavy equipment. That is why we build the #1 selling hydraulic dovetail gooseneck trailer in the US.



Not Available



Tail Options

From the standard straight deck with slide-in ramps to 10 ft powered hydraulic dovetail, we have the tail option that is right for you. This list of options include dovetails with flip-over ramps, stand-up ramps, center pop-ups, split pop-ups, and even adjustable dovetails.



Fewer Options



Wide Variety of Options

We don't believe a customer should have to settle for a trailer that isn't what they want. That is why we offer a wide variety of options for our goosenecks including steel floors, deck on the neck, winch plates, hydraulic jacks, cold weather wiring harness, and more. We literally have thousands of option combinations to make sure your trailer is suited for your type of work.



Fewer Options



10 Gauge Heavy Duty Brake Wiring

We use 10 gauge wiring for our trailer brakes to make sure the brakes receive full power to stop the trailer. The best break controller and electric brakes can quickly become inferior if the wire is too small to transmit full power to the brakes. This wiring is slightly more expensive than what others use, but it is well worth it.



Light Gauge Wiring



3/16" Diamond Plate Steel Wheel Wells

Our Low-Profile Goosenecks (LD & LY) receive diamond plate wheel wells. This allows the deck to be as low as possible without sacrificing deck strength.



More Axle, Brake, and Suspension Options

If there is an axle, brake, or suspension combination you would like to have on your gooseneck, we probably have it. We work very closely with our vendors to provide a wide variety of axles and suspensions. These include hydraulic disc, hydraulic drum, torsion suspension, 12k-16k, Hutch suspension, air ride, air brakes, and more.



Dual Side Steps & Handles

Every PJ gooseneck comes equipped with front side steps on both sides and handles connected to the bumper gusset. This makes climbing on to the trailer deck a simple and safe task.



No Steps or Handles



More Deck Screws & Board Caps

We use extra deck screws on our gooseneck flooring to make sure boards stay secured to the frame. We also "cap our boards" by installing them below the front and rear bumpers to keep the boards from curling.



As few screws as possible



Watertight Heat Shrink Connectors

One of the most common places other manufacturers try to cut cost and save labor is by using splice connectors (commonly known as "Scotch Locks"). Splice connectors offer little to no protection against water and corrosion. We use heat shrink butt connectors that are watertight and extremely reliable.



Splice Connectors